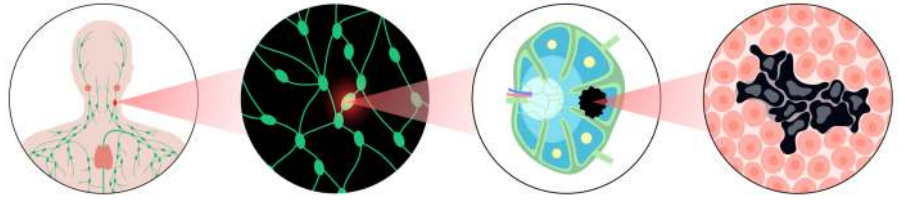


LYMPHOMA

YINTONI I-LYMPHOMA?



- I-Lymphoma **ngumhlaza** we-**lymphocytes**, ezi **-white blood cells** ezinceda umzimba ekulweni ulosuleleko.
- I-Lymphocytes zifumaneka kwincindi ebizwa i-lymph, etyhutyha umzimba wonke
- I-lymphatic system luthotho lwemithambo, amadlala namanye amalungu omzimba afana nodakada nedlala elikhupha amajoni okhuseleko ukulwa izifo ngezifo.
- Ii-Lymphocyte zisoloko ziqokelela iimbulaphu ngokuqhelekileyo emakhwapheni, emqaleni - ukulwa ulosuleleko, kodwa zingafumaneka nandawoni na emzimbeni.
- I-Lymphoma ivele xa kukhula ii-**lymphocyte ezingaqhelekanga** ziqokelelane zihlane kwimbulaphu okanye kwamanye amalungu omzimba.

IINTLOBO ZE-LYMPHOMA

Zimbini ezona ntlobo zesi sifo, yi-**Hodgkin's Lymphoma**, ebangelwa ziseli i-Reed-Sternberg cells kunye ne-**Non-Hodgkin's Lymphoma (i-NHL)** eneentlobo zeseli.



Kuleminyaka idlulileyo, aye axhuma amanani ozalwano lwezigulo - abo baphila nentsholongwane kaGawulayo i-HIV/AIDS bakumngcipheko omandla wokuba nelymphoma ngenxa yobuthathaka bamalungu alwa nentsholongwane.

I-CANSA INIKEZELA NGENKXASO EMANDLA NEZISEKO KWAYE IYABAXHASA ABO BACHATSHAZELWE NGUMHLAZA



Research • Educate • Support



www.cansa.org.za | Toll-free: 0800 22 66 22 | info@cansa.org.za

LYMPHOMA
COALITION

*Source: lymphomacoalition.org

LYMPHOMA

IIMPAWU ZOLOSULELEKO

Iimpawu ze-*lymphoma* maxa wambi zibonakala kwabanye abantu njengesigulo esingena bungozi kangako esifana nokhohlo-khohlo naluphi na uhlobo lolosuleleko. Xa une-*lymphoma*, zithatha ixesha elide ukuphela ezimpawu. Akwaziwa ukuba zibangelwa lolunye ulosuleleko okanye esinye isifo.



IIMPAWU EZIQHELEKILEYO

- Ukudumba kweembulaphu, aziqaqambi amaxesha amaninzi
- Ubushushu okanye ukugodola
- Umkhuhlane oquqa ubuyelela
- Ukubila ngokugqithisileyo
- Ukuhla emzimbeni ngezizathu ezingaziwayo
- Ukungacaceli kutya
- Ukusoloko udiniwe ungenawo amandla
- Ukuphelelwa ngumoya wokuphefumla nokukhohlela
- Ukurhawuzelela komzimba
- Ukusoloko udiniwe
- Ukudumba kwamadlala
- Intloko eqaqambayo



Ngokuya isanda i-lymphomas, umzimba uye woyisakale ukulwa ulosuleleko.

EZINYE IIMPAWU

- Abantu bangeva iintlungu kwiimbulaphu emva kokusela utywala
- Ukuba i-lymphoma inwenwela kwi-lymphatic tissue elapha ezantsi kwesisu, emathunjini okanye esiswini, incindi ingaqokelelana emathunjini nto leyo engakhokhelela uxinzelelo kumazantsi esisu, urhudo, ukungacoleki kokutya.
- Iimbulaphu ezinkulu maxa wambi zibangela ezinye iimpawu ngokucinezela imithambo (oko kubangela ukudumba kwengalo okanye umlenze), okanye icinezele umthambo-luvo (ibangele iintlungu, ubundindisholo, ukushukuma kwengalo okanye umlenze).
- Abanye abantu baye babe nomqolo obuhlungu, ongabe ubangelwa kukwanda kwembilaphu.

I-CANSA INIKEZELA NGENKXASO EMANDLA NEZISEKO KWAYE IYABAXHASA ABO BACHATSHAZELWE NGUMHLAZA