



Cancer Association of South Africa (CANSA)

Fact Sheet on The Incidence of Cancer Among Females from 2000 to 2014

Introduction

The purpose of this Information Sheet is to provide an overview of the incidence of all cancers diagnosed among South African females from 2000 to 2014. Information is according to statistics obtained from the South African National Cancer Registry for each of the applicable years.

The cancer statistics are provided in groups of five cancers per graph to make it more legible. There is also an indication of the number of cases diagnosed per cancer per year.

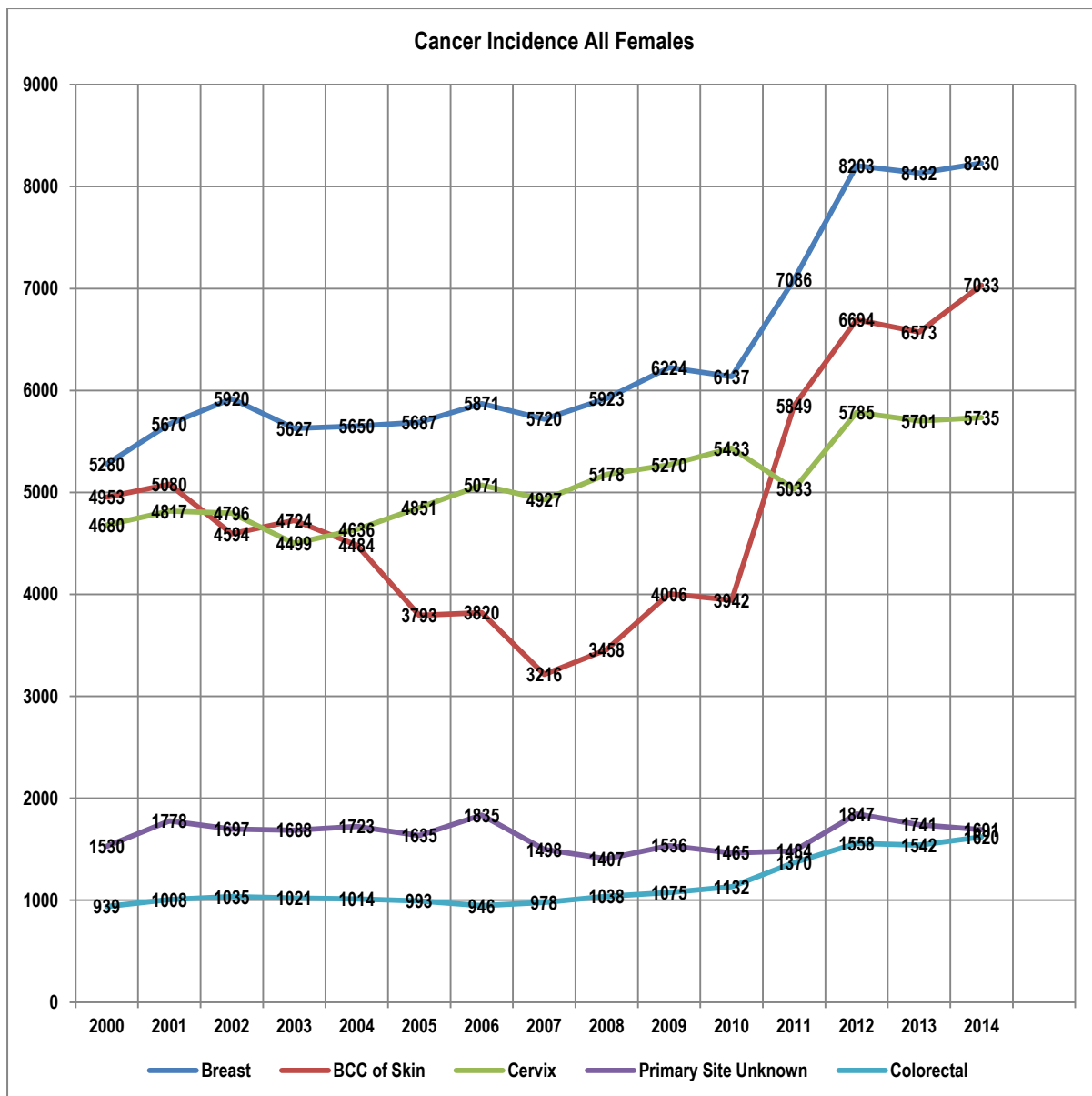
Statistics cannot tell one exactly what will happen to each person individually. It is information that applies to a group or population of people from which the statistics were calculated. This could be tens, hundreds or thousands of people.

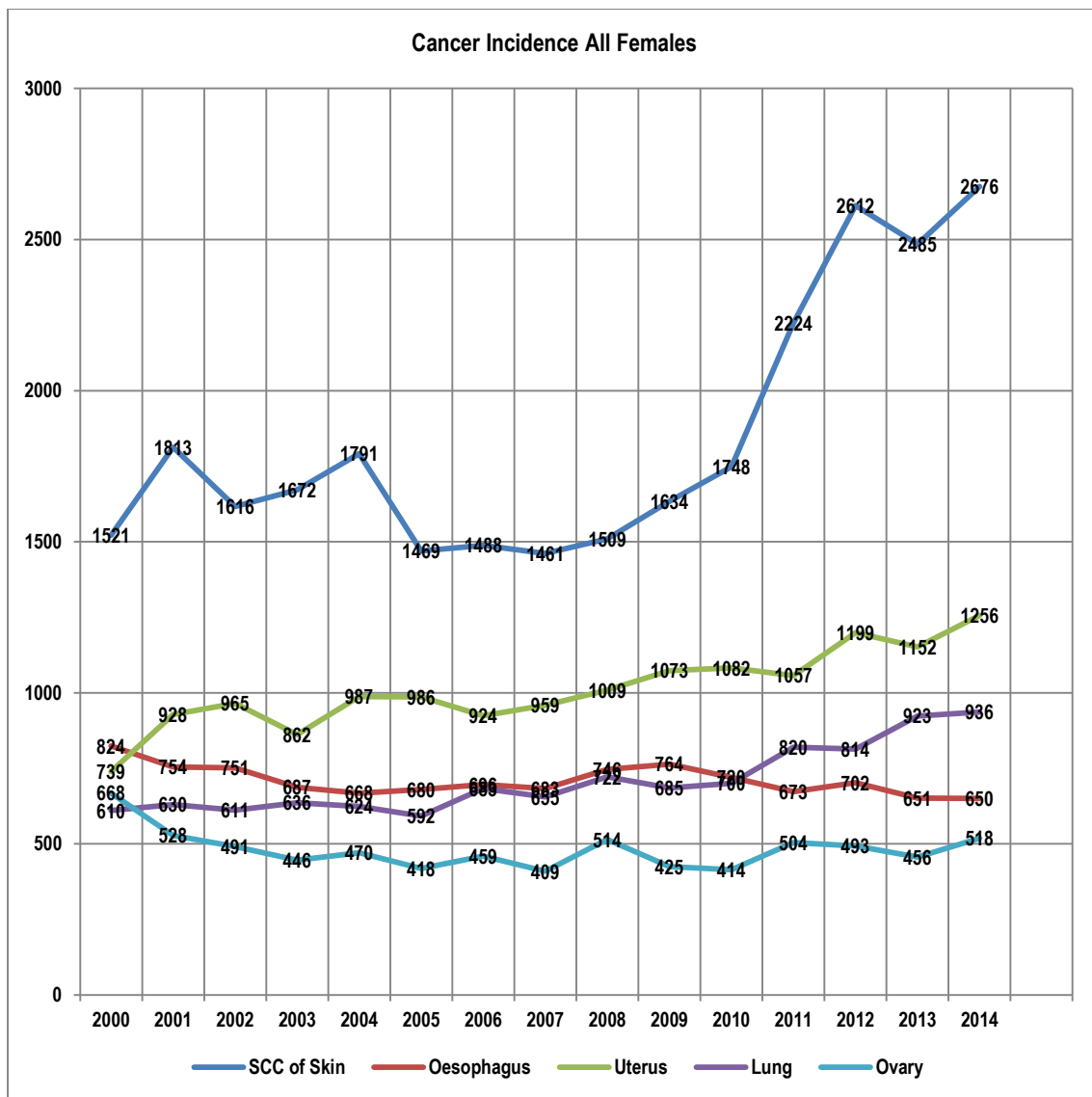
Every individual is unique and no statistic is able to give one exact answers about the outcome of a particular cancer.

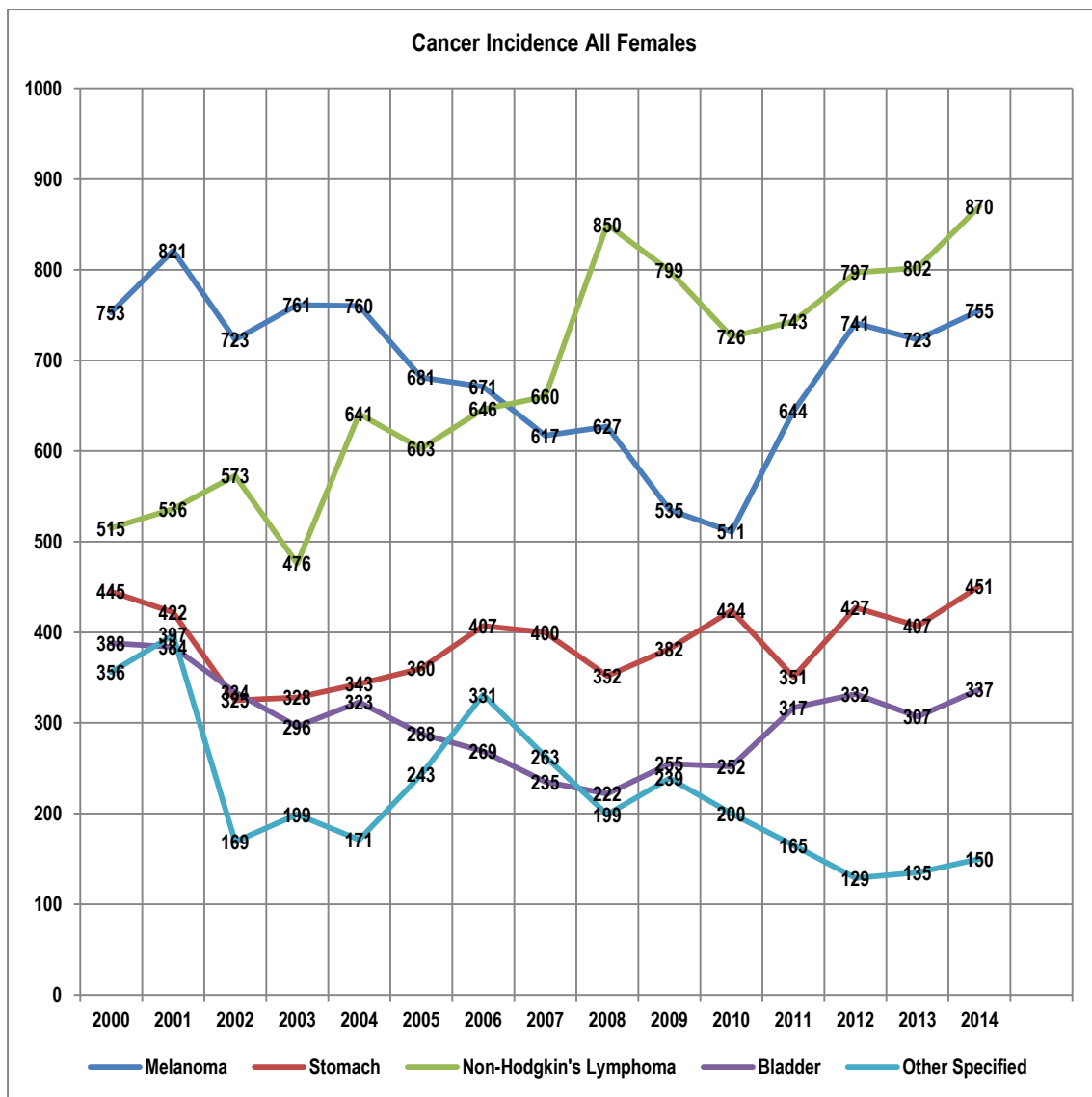
The Minister of Health published Regulations in the Government Gazette during the course of 2014 to make cancer a registrable disease. Because not all laboratories reported cancer diagnoses to the National Cancer Registry, one cannot have a true reflection of the incidence and burden of cancer in South Africa.

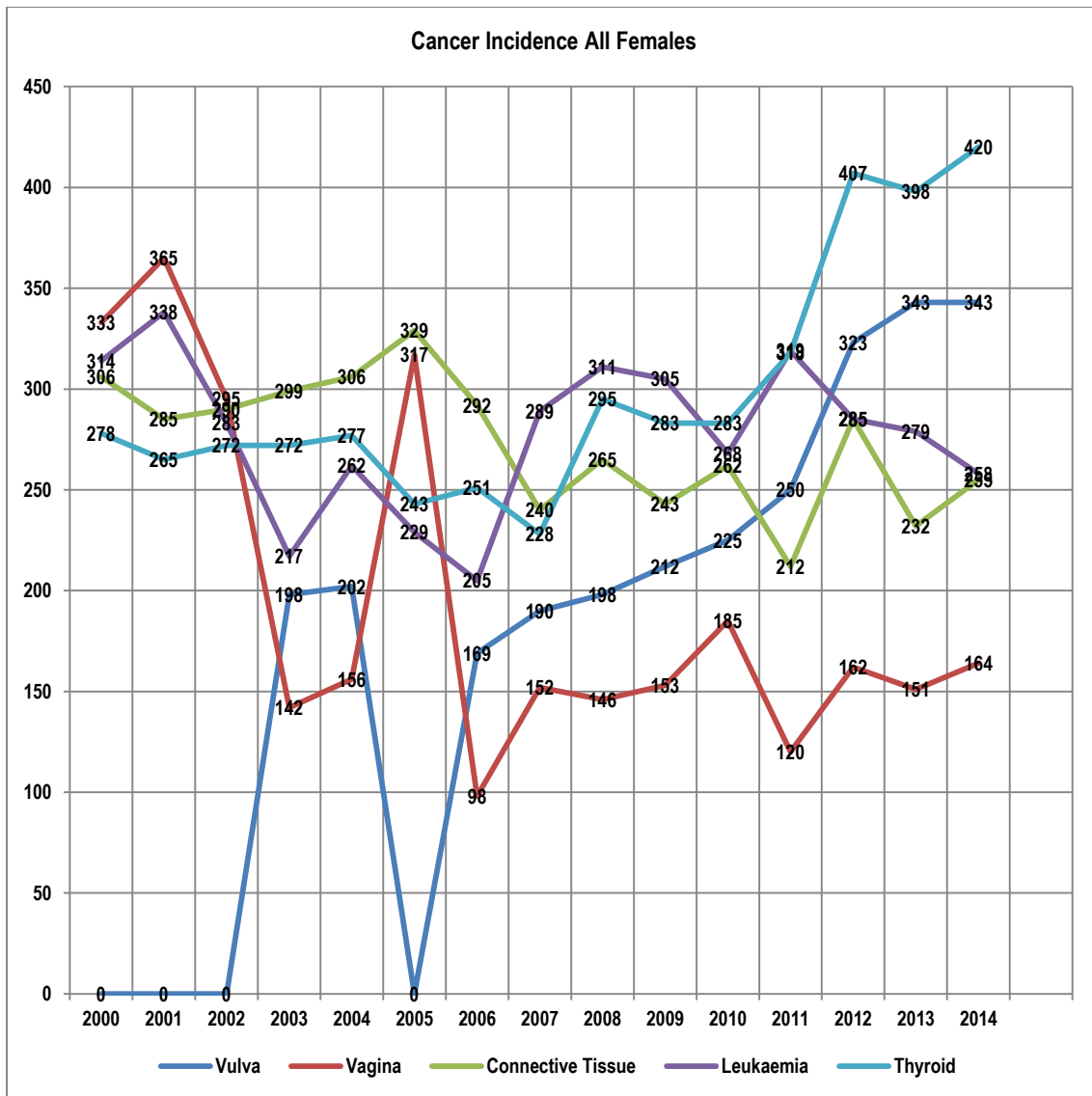
The tables below serve as an indication of the incidence and burden of cancer in South Africa from 2000 to 2014 in terms of the available cancer data.







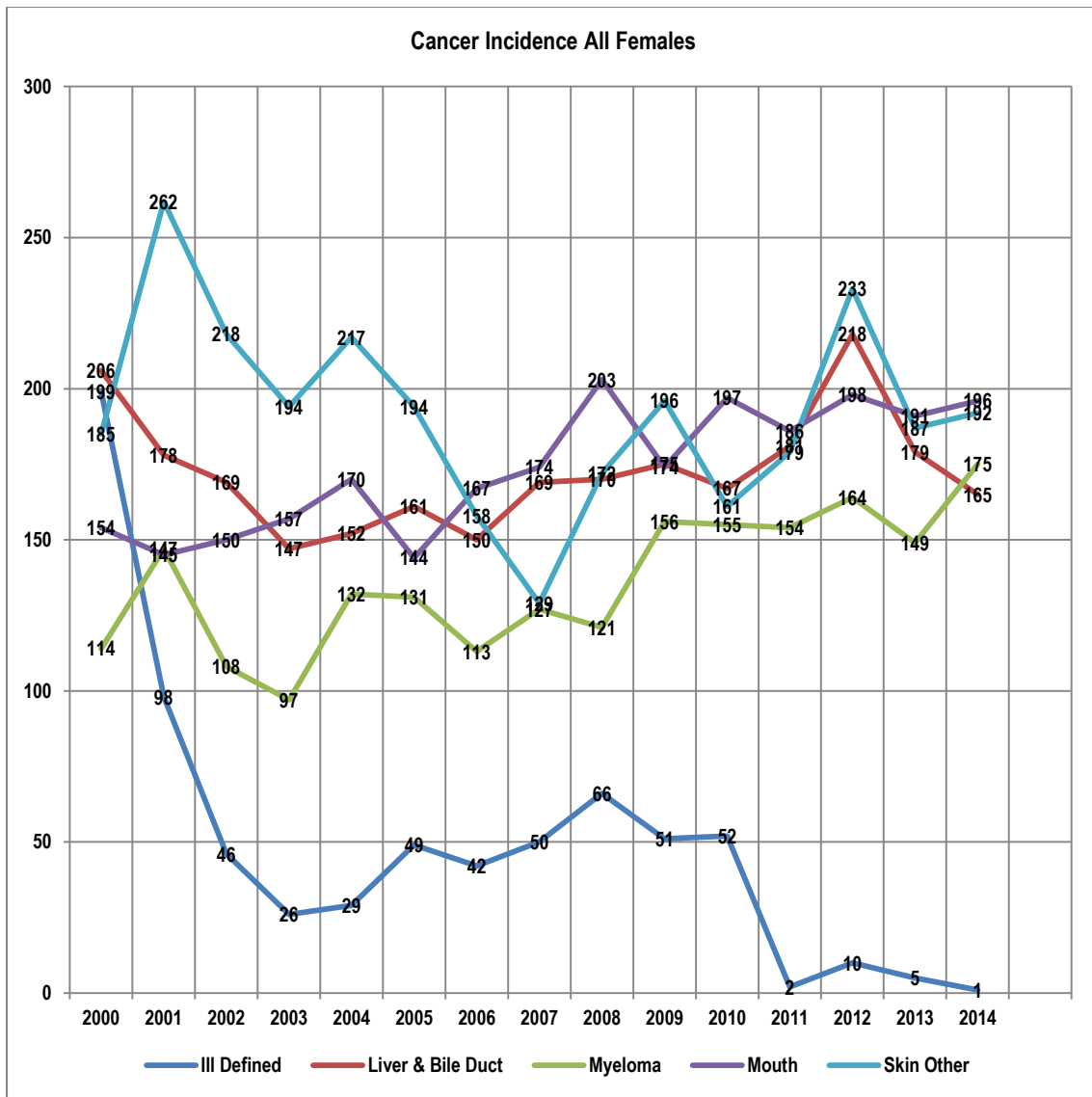




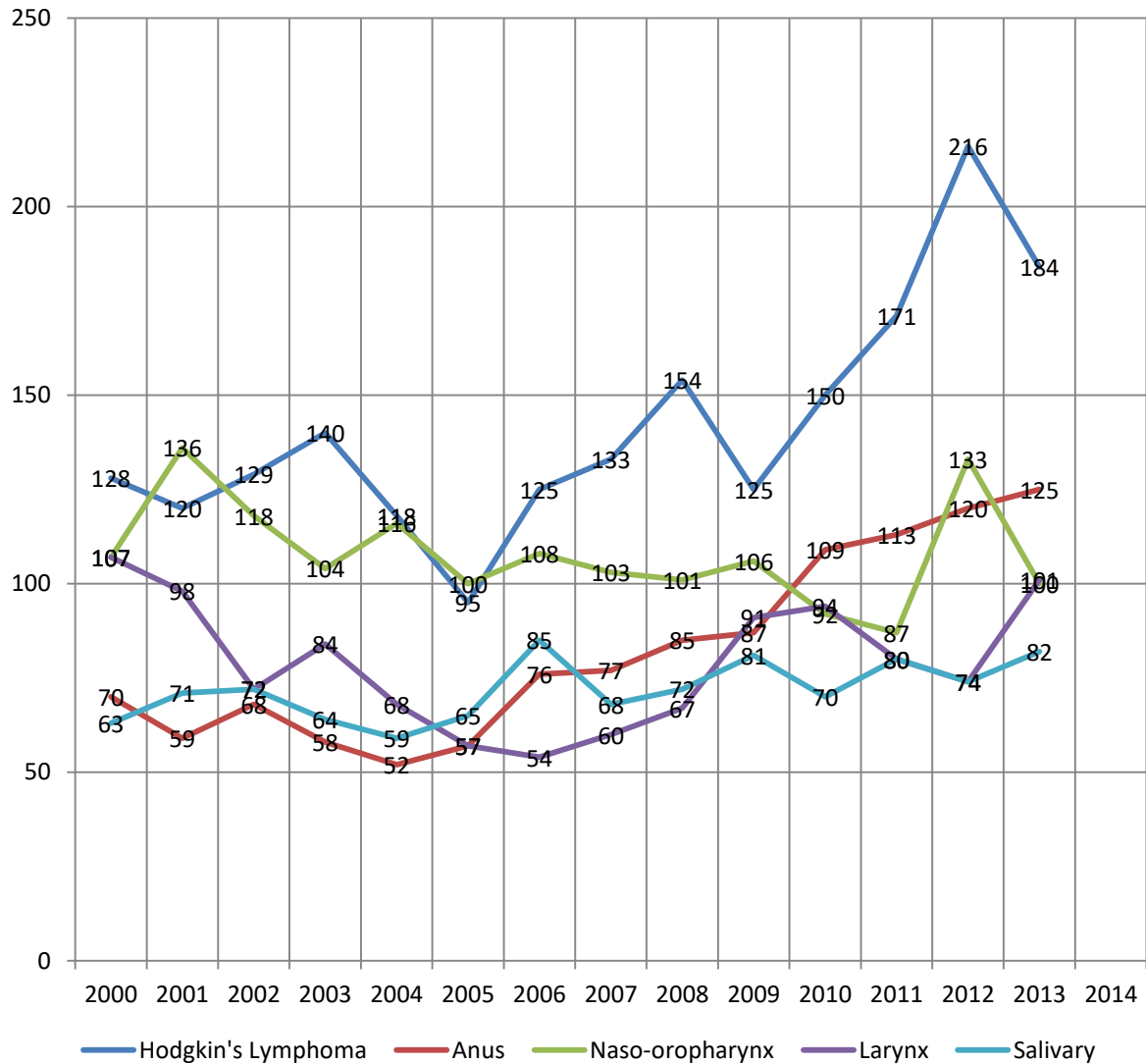
Important Notice:

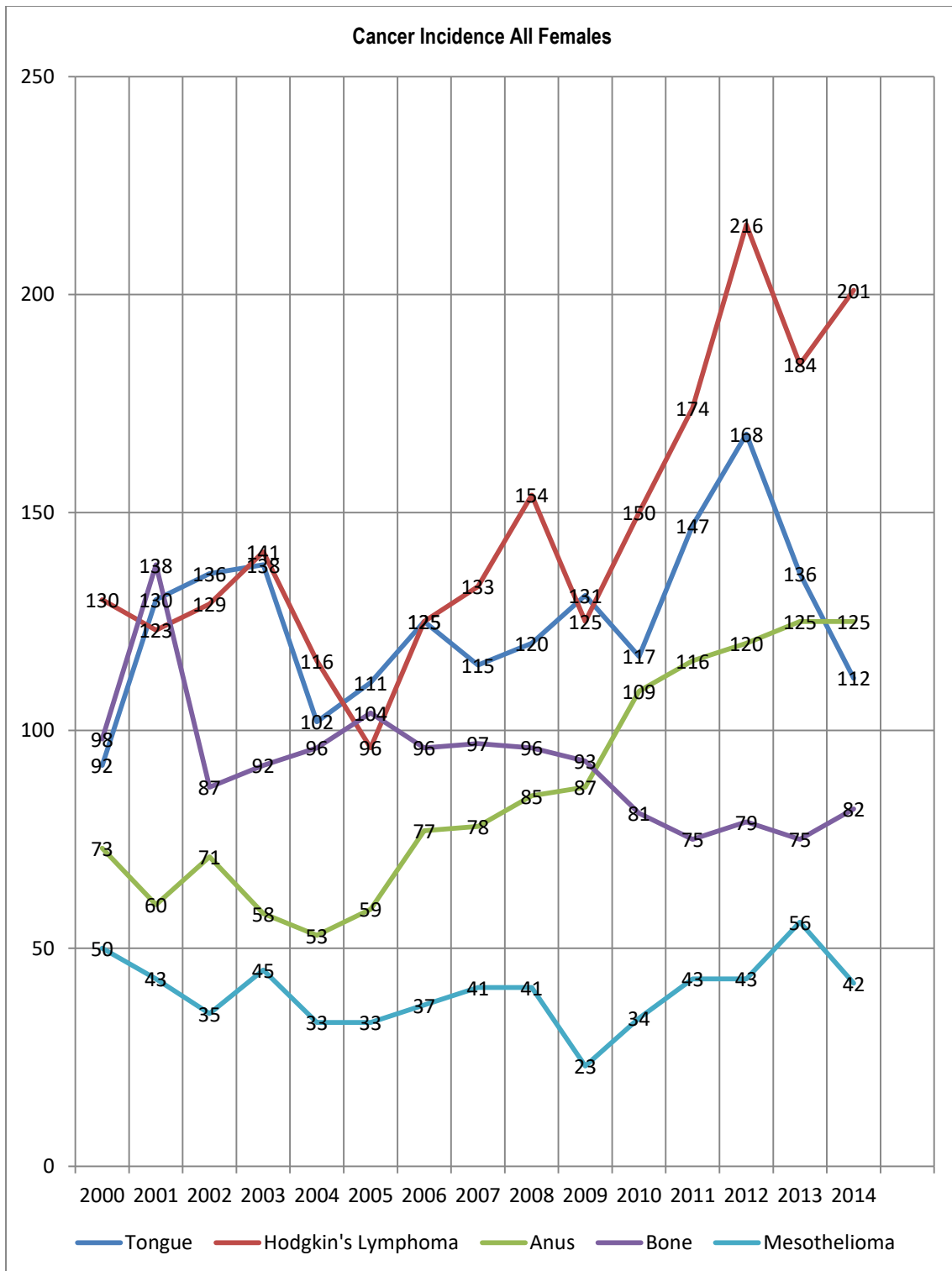
In the following National Cancer Registers, statistics for Vulval and Vaginal Cancers were combined:

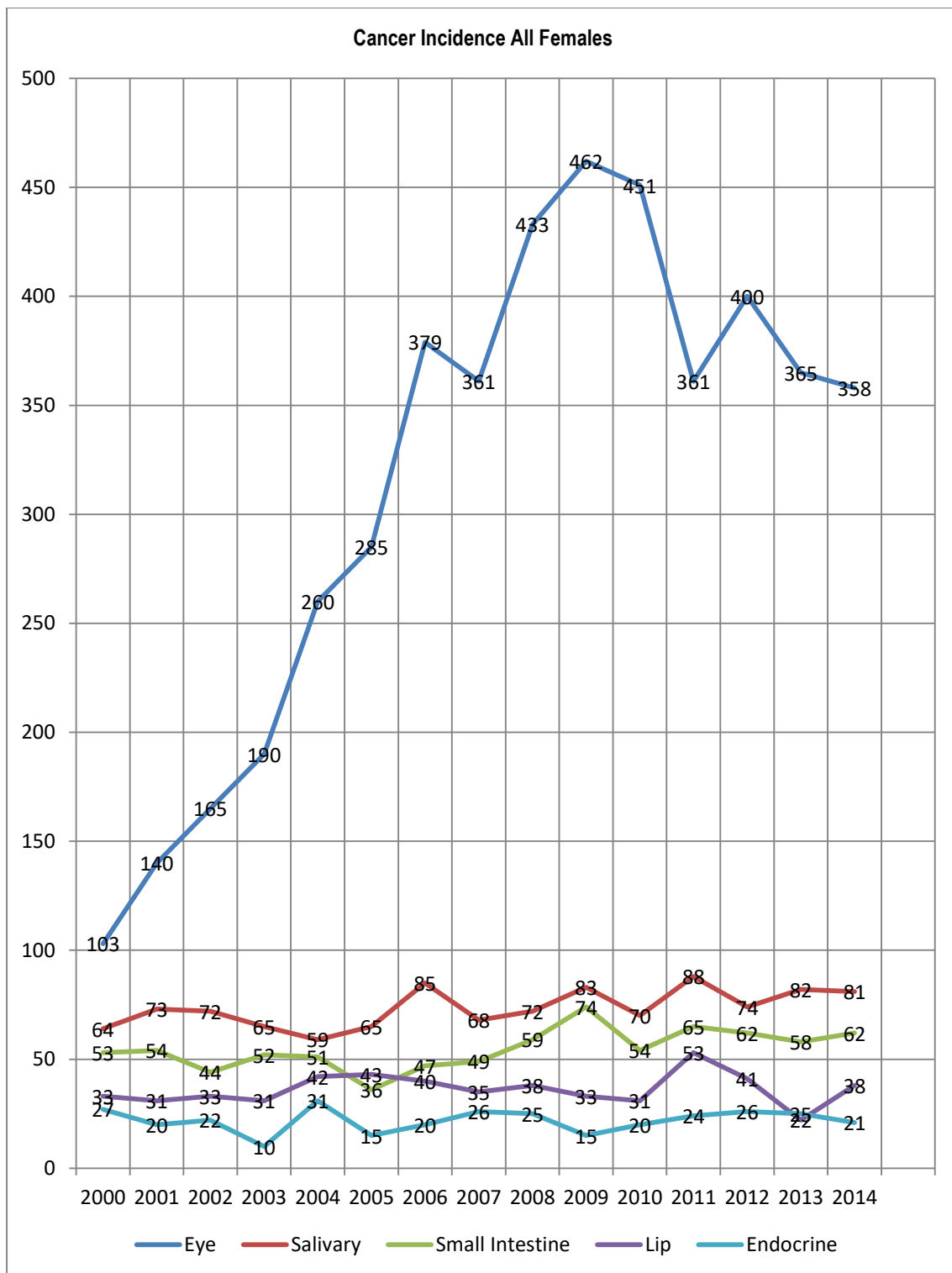
- 2000
- 2001
- 2002
- 2005

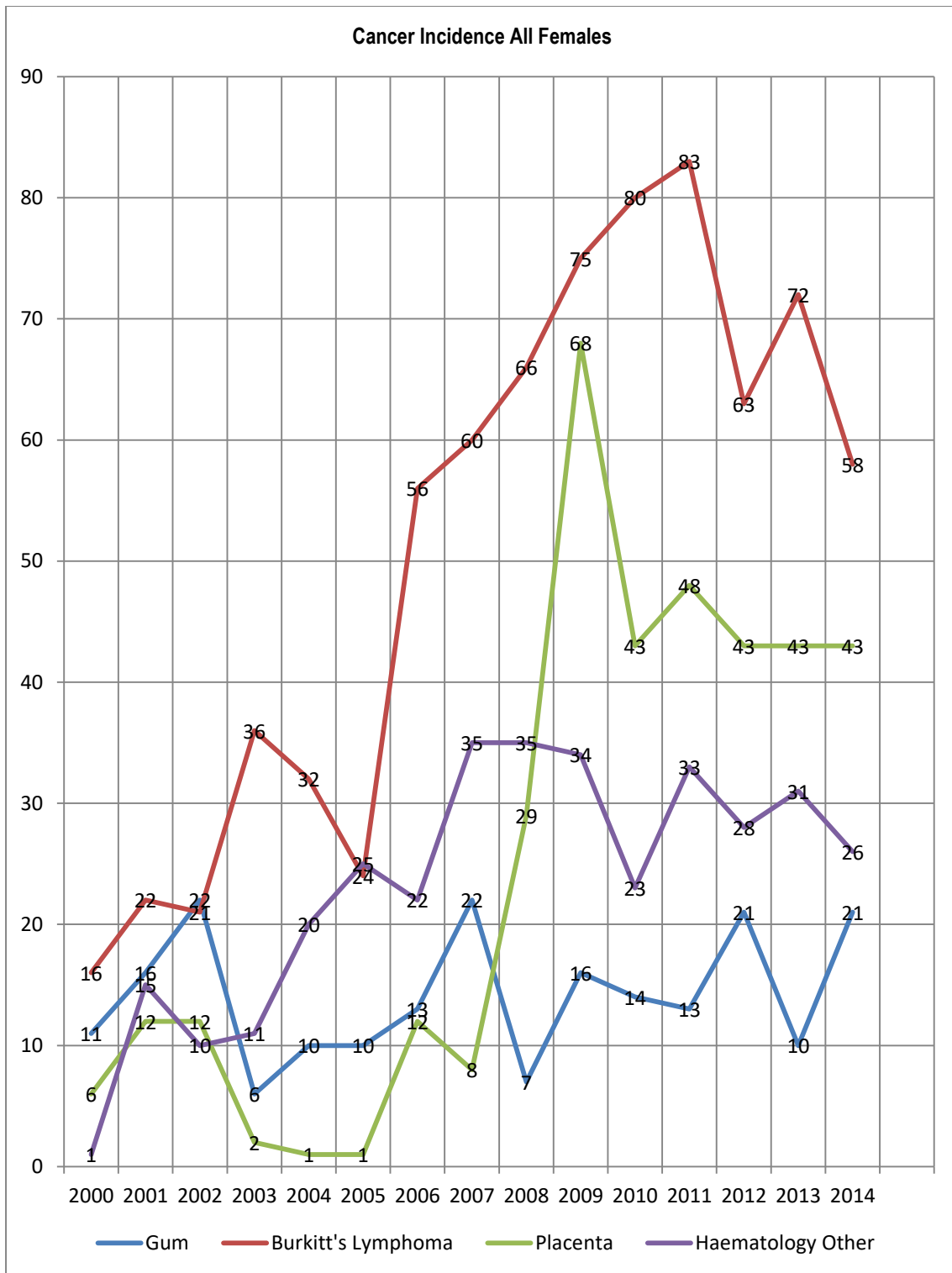


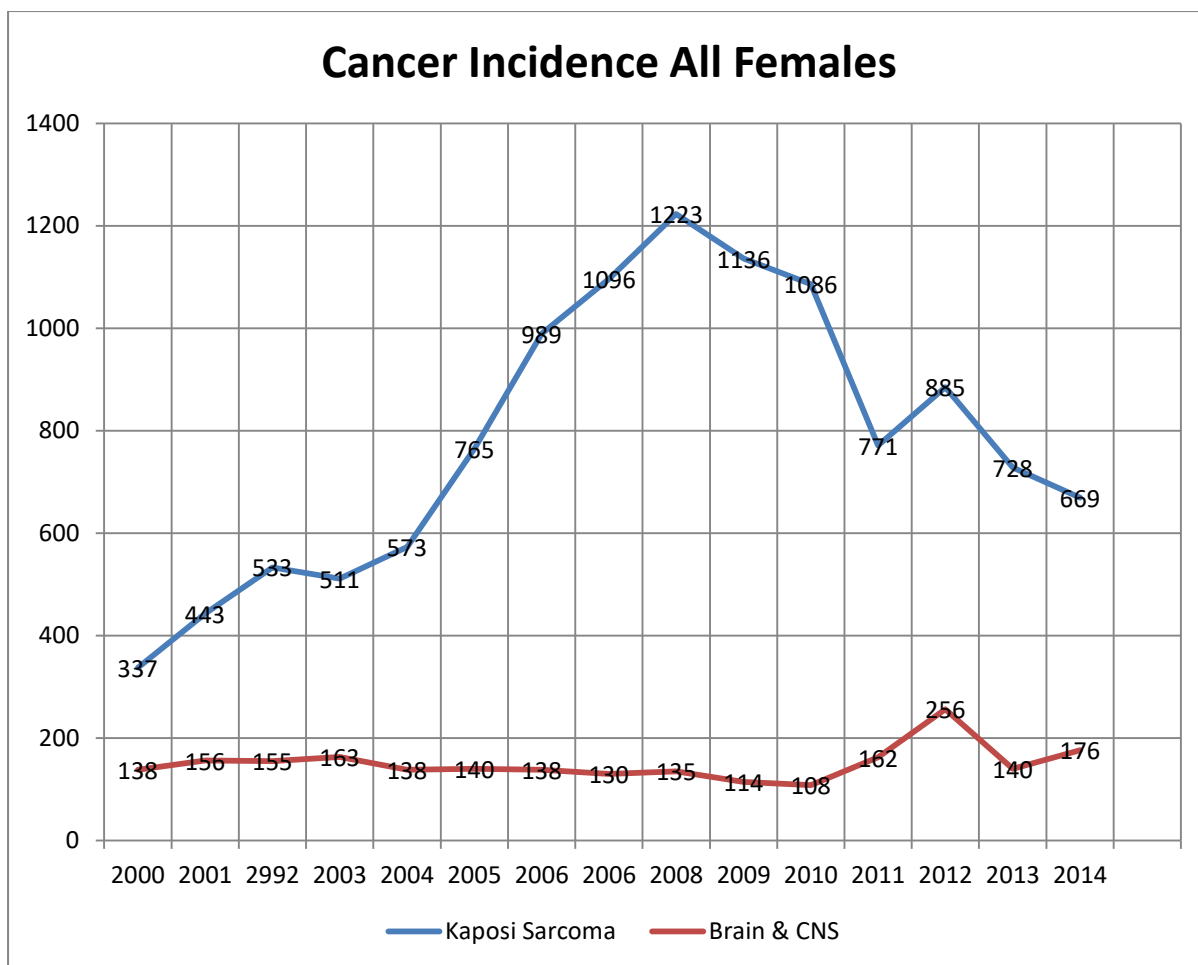
Cancer Incidence All Females











Medical Disclaimer

This Fact Sheet is intended to provide general information only and, as such, should not be considered as a substitute for advice, medically or otherwise, covering any specific situation. Users should seek appropriate advice before taking or refraining from taking any action in reliance on any information contained in this Fact Sheet. So far as permissible by law, the Cancer Association of South Africa (CANSA) does not accept any liability to any person (or his/her dependants/estate/heirs) relating to the use of any information contained in this Fact Sheet.

Whilst CANSA has taken every precaution in compiling this Fact Sheet, neither it, nor any contributor(s) to this Fact Sheet can be held responsible for any action (or the lack thereof) taken by any person or organisation wherever they shall be based, as a result, direct or otherwise, of information contained in, or accessed through, this Fact Sheet.



Researched and Compiled by Prof Michael C Herbst
 [D Litt et Phil (Health Studies); D N Ed; M Art et Scien; B A Cur; Dip Occupational Health; Dip Genetic Counselling; Diagnostic Radiographer; Dip Audiometry and Noise Measurement]

Approved by Ms Elize Joubert, Chief Executive Officer [BA Social Work (cum laude); MA Social Work]

Sources and References

South African National Cancer Registry, 2000; 2001; 2002; 2003; 2004; 2005; 2006; 2007; 2008; 2009; 2010; 2011; 2012; 2013; 2014.

<https://www.google.co.za/?ion=1&espv=2#q=national%20cancer%20registry%20south%20africa%202011>