

THE BIG 5 CANCERS AFFECTING WOMEN IN SA UTERINE CANCER

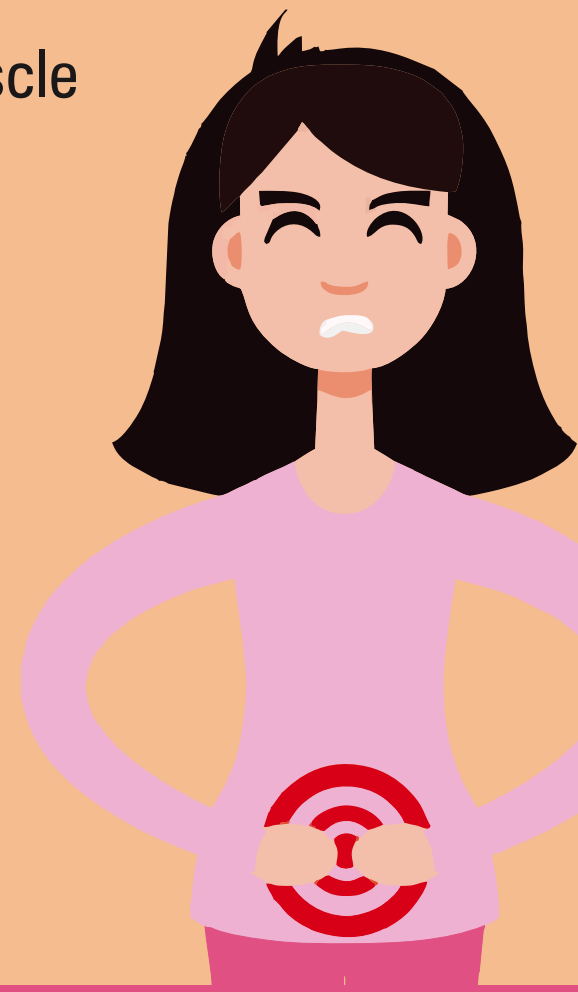
1:147*

Estimated Lifetime Risk for
Uterine Cancer

- Cancer of the uterus is also referred to endometrial or uterine cancer.
- Endometrial cancer is a disease in which malignant (cancer) cells form in the tissues of the endometrium.
- The endometrium is the lining of the uterus, the hollow, muscular organ in a woman's pelvis.
- Cancer of the endometrium is different from cancer of the muscle of the uterus, which is called sarcoma of the uterus.

SYMPTOMS OF UTERINE CANCER

- Abnormal Vaginal Bleeding or discharge that is not normal for you.
- Pain in pelvis or abdomen especially when passing urine or having sex



RISK FACTORS OF UTERINE CANCER INCLUDE

- Age
- Obesity and lack of exercise
- Smoking
- Alcohol use
- Family History
- Genetics
- Inability to fall pregnant
- Infrequent menstrual cycle or starting menses before the age of 12
- Oestrogen replacement therapy without the use of progesterone

*according to the National Cancer Registry (2012)



Toll-free 0800 22 66 22

www.cansa.org.za



Research • Educate • Support